

## Reconciling nature conservation and traditional farming practices: a spatially explicit framework to assess the extent of High Nature Value farmlands in the European countryside

Angela Lomba<sup>1,2,3</sup>, Paulo Alves<sup>1</sup>, Rob H. G. Jongman<sup>2</sup> & David I. McCracken<sup>3</sup>

<sup>1</sup>Centro de Investigação em Biodiversidade e Recursos Genéticos (CIBIO), Campus Agrário de Vairão, 4485-661 Vairão, Portugal

<sup>2</sup>Alterra, Wageningen University and Research Centre, P.O. Box 47, 6700 AA Wageningen, the Netherlands

<sup>3</sup>Hill & Mountain Research Centre, Scotland's Rural College, Auchincruive, Ayr KA6 5HW, UK

### Keywords

Agri-environment schemes, agro-biodiversity, conservation and monitoring programs, indicators, low-intensity farming practices.

### Correspondence

Ângela Lomba, CIBIO, Centro de Investigação em Biodiversidade e Recursos Genéticos, Campus Agrário de Vairão, R. Padre Armando Quintas, 4485-661 Vairão, Portugal.

Tel: +351 220 402 790;

Fax: +351 220 402 799;

E-mail: angelalomba@fc.up.pt

### Funding Information

A.L. is supported by the Portuguese Science and Technology Foundation (FCT) through Postdoctoral Grant SFRH/BPD/ 80747/2011. D.M. input to this manuscript was partially funded by the Scottish Government Rural Affairs & Environment Portfolio Strategic Research Programme 2011–2016, Theme 3: Land Use.

Received: 9 July 2014; Revised: 25 November 2014; Accepted: 6 January 2015

*Ecology and Evolution* 2015; 5(5): 1031–1044

doi: 10.1002/ece3.1415

## Introduction

Over past centuries, European landscapes have been shaped by human management. Traditional, low-intensity agricultural practices, adapted to local climatic, geographic, and environmental conditions, led to a rich, diverse cultural and natural heritage, reflected in a wide range of rural landscapes, most of which were preserved until the advent of industrialized agriculture (Bignal &

## Summary

- 1 Agriculture constitutes a dominant land cover worldwide, and rural landscapes under extensive farming practices acknowledged due to high biodiversity levels. The High Nature Value farmland (HNVf) concept has been highlighted in the EU environmental and rural policies due to their inherent potential to help characterize and direct financial support to European landscapes where high nature and/or conservation value is dependent on the continuation of specific low-intensity farming systems.
- 2 Assessing the extent of HNV farmland by necessity relies on the availability of both ecological and farming systems' data, and difficulties associated with making such assessments have been widely described across Europe. A spatially explicit framework of data collection, building out from local administrative units, has recently been suggested as a means of addressing such difficulties.
- 3 This manuscript tests the relevance of the proposed approach, describes the spatially explicit framework in a case study area in northern Portugal, and discusses the potential of the approach to help better inform the implementation of conservation and rural development policies.
- 4 Synthesis and applications: The potential of a novel approach (combining land use/cover, farming and environmental data) to provide more accurate and efficient mapping and monitoring of HNV farmlands is tested at the local level in northern Portugal. The approach is considered to constitute a step forward toward a more precise targeting of landscapes for agri-environment schemes, as it allowed a more accurate discrimination of areas within the case study landscape that have a higher value for nature conservation.

McCracken 2000; Paracchini et al. 2010; Oppermann et al. 2012).

Agricultural landscapes currently account for half of Europe's territory (Overmars et al. 2013), with ca. 50% of all species relying on agricultural habitats at least to some extent (Kristensen 2003; Moreira et al. 2005; Halada et al. 2011). Due to their acknowledged role in the maintenance of high levels of biodiversity, low-intensity farming systems have been highlighted as critical to nature

conservation and protection of the rural environment (Beaufoy *et al.* 1994; Paracchini *et al.* 2010; Halada *et al.* 2011; Egan & Mortensen 2012). Many areas included in the Natura 2000 network, the main policy initiative for nature conservation in the European Union, are currently under agricultural management for crop or livestock production. Maintaining such High Nature Value farming systems is crucial for the long-term success of Natura 2000 as a fundamental ecological network in Europe (EEA 2004).

The concept of “High Nature Value farmlands” (hereafter HNVf; Beaufoy *et al.* 1994) was devised to help characterize and direct financial support to those agriculture-dominated landscapes where high nature and/or conservation value is dependent on the continuation of specific low-intensity farming systems (Andersen *et al.* 2003; Pedrolí *et al.* 2007; Halada *et al.* 2011; Ribeiro *et al.* 2014). HNVf owe their intrinsic ecological value to the presence of semi-natural agricultural habitats (defined after Andersen *et al.* 2003 as type 1, hereafter HNVf<sub>1</sub>), to the presence of small crop fields intermingled with other farmland features such as mature trees, shrubs, scrub, or linear features such as field margins and hedges (defined after Andersen *et al.* 2003 as type 2, hereafter HNVf<sub>2</sub>), and to the presence of species of high conservation interest (e.g., bird, reptiles), in often intensively managed landscapes (defined after Andersen *et al.* 2003 as type 3, hereafter HNVf<sub>3</sub>).

While farmlands of high nature value and their associated management practices have been widely acknowledged as beneficial for biodiversity enhancement (e.g., Bignal & McCracken 2000; Egan & Mortensen 2012), such landscapes have been declining due to rural depopulation, agricultural abandonment and afforestation in marginal farming areas, and intensification in the most productive areas (Stoate *et al.* 2009; EEA 2012; Oppermann *et al.* 2012; Ribeiro *et al.* 2014). As a consequence, the importance of HNVf for nature conservation and rural development is now enshrined within Europe’s agricultural and environmental policies (Stoate *et al.* 2009; Jongman 2013; Ribeiro *et al.* 2014), and assessing changes to the area of agricultural land under HNVf is currently one of the biodiversity indicators used to evaluate the effectiveness of EU Member State Rural Development Programs (RDPs; EC 2006; Peppiette 2011).

Assessing the extent of HNV farmland by necessity relies on both ecological and farming systems’ data, and difficulties with making such assessments have been widely described (Peppiette 2011; Oppermann *et al.* 2012; Lomba *et al.* 2014). While EU common methodological guidelines broadly rely on land cover, farming system and species data to identify HNV farmlands extent, condition, and dynamics (Andersen *et al.* 2003; EC 2006; Paracchini

*et al.* 2008; EENRD 2009; Peppiette 2011; Lomba *et al.* 2014), the diversity of rural landscapes across the EU, the lack of suitable datasets on essential indicators, and especially the absence of a common methodology for mapping currently constrain the operationalization of the HNVf concept as a policy instrument across Europe (Pedrolí *et al.* 2007; Peppiette 2011; EEA 2012; Oppermann *et al.* 2012). Hence, the identification, testing, and implementation of effective spatially explicit indicators that could be used to express landscape and/or crop heterogeneity in relation to known biodiversity levels and management practices have been encouraged (Wascher *et al.* 2010; EEA 2012; Lomba *et al.* 2014).

In this manuscript, a spatially explicit framework is presented after Lomba *et al.* (2014) to assess the extent of HNVf at the local administrative unit level (LAU, as defined by Eurostat; <http://epp.eurostat.ec.europa.eu/>). Lomba *et al.* (2014) advocate that a common European framework for the identification, mapping, and regular assessment (i.e., monitoring) of HNVf areas should rely on the highest spatial and temporal resolution data available within each administrative unit and implemented in each targeted area, ensuring that the most accurate data are always mobilized to help identify HNVf and assess rural development programs at a local, national, and EU level (RDPs; EC 2006; but see Lomba *et al.* 2014 for a review). Overall, our HNVf mapping approach relies on the spatially explicit analysis and combination of sets of indicators known to express the most relevant ecological and management features of agro-ecosystems (Lomba *et al.* 2014), that is, data expressing landscape structure and composition (Landscape Elements indicators), farming systems (Extensive Practices indicators), and crop diversity (Crop Diversity indicators). Additionally, information on species whose survival is dependent on the maintenance of extensive farmlands is also included (Indicator Species). The proposed approach is illustrated for a municipality located in a mountainous area of northern Portugal. The proposed spatially explicit approach and its outcomes in the study area are discussed in the context of land-sharing for biodiversity conservation and/or enhancement in the EU countryside, together with its potential application to HNVf assessment across Europe and to helping improve the targeting of agri-environment schemes.

## Materials and Methods

### Study area

The municipality of Melgaço, located in a mountainous area of northern Portugal (Minho-Lima region, NUTS III; Eurostat, <http://epp.eurostat.ec.europa.eu/>)

between latitudes of  $41^{\circ}55'20''$  and  $42^{\circ}9'11''$ N and longitudes of  $8^{\circ}4'52''$  and  $8^{\circ}20'32''$ W (Fig. 1), includes 18 civil parishes, each of which corresponds to a local administrative unit (LAU 1). The whole area is considered a Less Favoured Areas (LFA) is a EU legal designation, so it is not supposed to be changed across text. and, more specifically, classified as a mountain/hill area according to the article 3.3 of Directive 75/268/EEC (e.g., Beilin et al. 2014). The southeastern part of Melgaço is part of the Peneda-Gerês National Park (Fig. 1), a protected area with ca. 70,000 ha, classified also as Site of Community Importance (SCI, PTCO0001) and Special Protection Area (SPA; PTZPE0002) of the EU Natura 2000 network. The northern part is included in the fluvial SCI "Rio Minho" (PTCON0019).

Melgaço's landscapes include a mixture of lowland areas, large valleys, and mountain massifs. Being a LFA, Melgaço's natural handicaps (mostly related to altitude, steep slopes, poor soils, harsh climatic conditions, and isolation) shaped the agricultural landscapes, which are characterized by a pattern of small and fragmented low-intensity traditional farms, which produce mainly for

self-consumption (Pôças et al. 2011; Lomba et al. 2012; Beilin et al. 2014). Such traditional agro-pastoral systems have shaped two types of landscape mosaics: (1) open grazing lands ("outfields", mainly "baldios") with oligotrophic soils, dominated by heath, low scrub and mesic, acidophilous grasslands at plateau and summit areas and (2) forest-rich agricultural lands ("infields") on nutrient-rich soils at the bottom of slopes and valleys, where hay meadows are the dominant elements, and where forest patches are managed for wood and water regulation services (Aguiar et al. 2010; Cerqueira et al. 2010; Lomba et al. 2012). These traditional agro-ecosystems not only include agricultural areas but also incorporate vast mountain areas which provide important natural pasture lands and sources of bedding for animals as well as firewood (Pôças et al. 2011; Maxted 2012). In lowland areas with a Mediterranean climate, farmland is usually located in mild slopes around rural villages and includes important areas of vineyards, as well as cereal fields and other annual crops. The steepest slopes are occupied by forest stands planted with *Pinus pinaster* Aiton and *Eucalyptus globulus* Labill. subsp. *globulus*. Overall, dominant HNVf



**Figure 1.** The study area, Melgaço municipality and encompassed parishes (D), and its geographic location in the European (A), Iberian (B), and Portuguese territories (C).

Coordinate system:  
Datum Lisboa Hayford-Gauss  
Projection TM - IGeoe

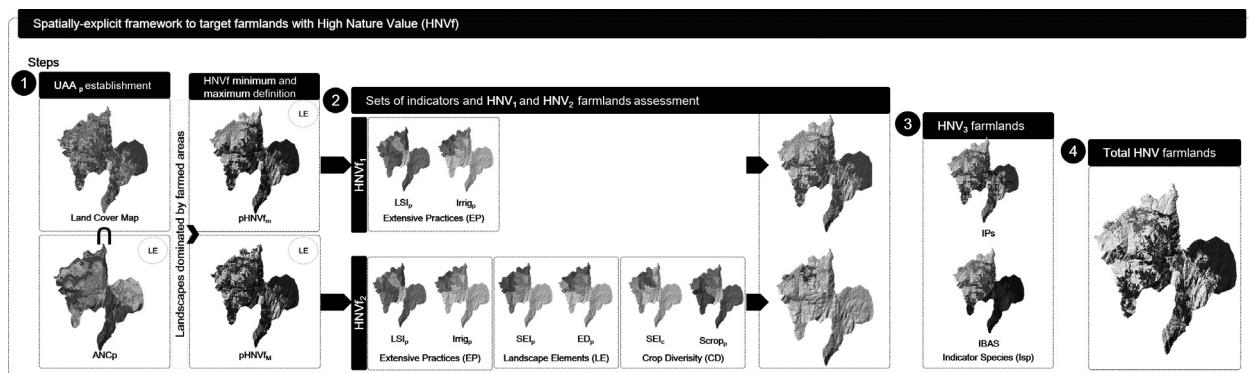
types include the high-altitude irrigated pastures (also known as “lameiros”), small terraces, and extensive communal grazings (“baldios”) as HNVf<sub>1</sub> (Oppermann et al. 2012), and the highly diverse complex mosaics of arable and horticultural crops, with vineyard and orchards, where small-scale livestock graze permanent pastures, often intermingled with arable land, as HNVf<sub>2</sub> (Moreira et al. 2005; Oppermann et al. 2012). Due to their characteristic biophysical constraints, traditional mountain farming systems, such as those observed in Melgaço, are facing collapse as a consequence of agricultural abandonment (Lomba et al. 2012; Beilin et al. 2014).

**Spatially explicit framework and proposed indicators to assess HNVf extent**

The backbone of the framework, outlined in Fig. 2, is the spatially explicit assemblage of distinct sets of information acknowledged as relevant data for HNV farmland assessment (Beaufoy 2008; Lomba et al. 2014). Although challenging, effective identification of agriculture-dominated areas, their degree of naturalness, and the underlying farming practices are essential for common HNVf mapping and monitoring across EU rural landscapes. Four sets of indicators are proposed: (1) landscape elements; (2) extensive practices; (3) crop diversity; and (4) indicator species (cf. Fig. 2 and Table 1; see Lomba et al. 2014), to provide information on landscape structure and composition, intensity and diversity of agricultural practices and on the occurrence of species of nature conservation value, respectively. Table 1 provides a detailed description of each set of indicators, the underlying rationale for their selection, and the type of HNVf which these assess. These indicators are built on the common EU guidelines for the

HNVf indicator implementation and aim to express proxies regarding land use, crop diversity, and farming systems (EENRD 2009). We advocate that such framework can support HNVf mapping and monitoring across EU countryside, as it is flexible enough to allow the mobilization of the best spatial and temporal resolution data within each targeted administrative unit (in each MS), while still complying with a common set of indicators.

The utilized agricultural area (UAA) was ascertained from a fine-scale land cover map (Step 1, see Table S1, Appendix S1 in Supporting Information for details). Here, individual landscapes were taken to be each one of the individual parishes that constitute the municipality. Classes expressing farmed areas and land cover classes covering areas off the farm (e.g., grazed heathlands and other grazing areas in common usage), known to express other semi-natural areas used as forage of fodder resources, were selected, and the total UAA per parish was determined (IEEP 2010; Oppermann et al. 2012). Data reflecting natural constraints for agriculture (ANC<sub>p</sub>; as defined by Van Orshoven et al. 2012; for detailed information see Table S2; Appendix S2 in Supporting Information) were applied, so that only heathlands under no or moderate limitations to agriculture were included. This enabled the identification of off-farm grazing areas, which are known to constitute a large proportion of HNVf in some regions (IEEP 2010; EEA 2012). Dominance of farmlands was established on the basis of the share of agriculture (P.UAA<sub>p</sub>; Table 1) and forest (broad-leaved, coniferous and mixed forests identified in the land cover map; P.Forest<sub>p</sub>; Table 1) per parish. For the eligible parishes, land cover classes associated with agricultural practices (i.e., coincident with the established UAA) were classified according to their potential to exhibit high



**Figure 2.** Spatially explicit approach to assess High Nature Value farmlands (HNVf types 1, 2, and 3). In Step 1, indicators reflecting landscape composition (LE) were applied to ascertain the utilized agricultural area (UAA), the dominance of agriculture at the landscape level (parish), and areas with high or moderate potential to be HNVf, assumed to be suitable to target HNVf<sub>1</sub> and HNVf<sub>2</sub>, respectively. In Step 2, indicators expressing the intensity of Farming Practices (EP) were applied to discriminate parishes that contain HNVf<sub>1</sub>; the intensity of Farming Practices, Landscape Elements, and Crop Diversity information (CD) were applied to identify HNVf<sub>2</sub>. The need to identify any additional areas of HNVf<sub>3</sub> was determined in Step 3, using information regarding Indicator Species. The total extent of HNVf was assembled in Step 4.



**Table 1.** Indicators used to implement the spatially explicit approach to assess the extent of High Nature Value farmlands. Indicators expressing landscape characteristics (Landscape Elements), the intensity (Extensive Practices), and the diversity (Crop Diversity) of farming practices, as well as occurrence of Indicator Species, are described and the rationale underlying their selection presented. %, stands for the percentage; n.a., nonapplicable.

Designation	Code(s)	Description and rationale	Source and Resolution	HNVf type	Reference
<b>Landscape Elements (LE)</b>					
Natural constraints for agriculture	ANC <sub>p</sub>	Areas with natural constraints to agricultural per parish; for details see Supplementary Information S2, used to define areas suitable for agricultural practices.	n.a.	HNVf type 1 HNVf type 2	Van Orshoven et al. (2012)
Farmlands dominance in the landscape	P.UAA <sub>p</sub> P.Forest <sub>p</sub>	Areas with higher percentages (%) of farmlands UAA (P.UAA <sub>p</sub> ) when comparing to areas covered by forests (P.Forest <sub>p</sub> ).	Associação de Municípios do Vale do Minho (2009)	HNVf type 1 HNVf type 2 HNVf type 3 HNVf type 1	Beaufoy et al. (1994), Andersen et al. (2003)
Minimum–Maximum HNV farmland areas	pHNVf <sub>m</sub> pHNVf <sub>M</sub>	Farmlands more likely to represent HNVf (Minimum, pHNVf <sub>m</sub> ) in the study area (Melgaço municipality) and per parish (Supporting Information S1) Farmlands with moderate potential to represent HNVf (Maximum, pHNVf <sub>M</sub> ) in the study area (Supporting Information S1)		HNVf type 2	Andersen et al. (2003), Paracchini et al. (2006)
Shannon's Diversity Index	SDI <sub>p</sub>	More diverse landscapes, with land cover types evenly distributed, are expected to have higher biodiversity.	Associação de Municípios do Vale do Minho (2009)	HNVf type 2	Tscharntke et al. (2005), BioBio (2012)
Shannon's Evenness Index	SEI <sub>p</sub>	Number of patches is often used as an indicator for landscape fragmentation, which sometimes is considered beneficial for agro-biodiversity.			Aavik & Liira (2009), Armengot et al. (2011)
Patch number	NP <sub>p</sub>	Higher MSI values occur in natural and semi-natural landscapes.			Tscharntke et al. (2005)
Mean shape index	MSI <sub>p</sub>	Density of edges (m/ha; meters per hectare) in relation to the parish area is relevant to wildlife maintenance as they constitute semi-natural habitats.			BioBio (2012)
Edge density	ED <sub>p</sub>				
<b>Extensive Practices (EP)</b>					
Livestock density index	LSI <sub>p</sub>	The number of livestock units per hectare of the UAA (LSU/ha of UAA) per parish. Lower values of LSU highlight the dominance of semi-natural forage, including grasslands and often scrub, woodlands, or a combination of several types.	INE (2009)	HNVf type 1 HNVf type 2	Pointereau et al. (2007), EENRD (2009), BioBio (2012)
Share of irrigated area	Irrig <sub>p</sub>	Share of irrigated area per total of UAA in each parish. Proxy for agricultural intensification.			Pointereau et al. (2010)
<b>Crop Diversity (CD)</b>					
Shannon's Evenness Index for Crop Diversity	SEI <sub>c</sub>	Crop diversity, associated with low inputs, and a network of natural and/or semi-natural features, express a high nature value for biodiversity conservation in farmlands.	INE (2009)	HNVf type 2	Andersen et al. (2003), Paracchini et al. (2008), BioBio (2012)
Crop richness	SCrop <sub>p</sub>	Number of crop types cultivated per parish. Lower specialization contributes to higher levels of biodiversity in agricultural landscapes.		HNVf type 2	BioBio (2012)

Table 1. Continued.

Designation	Code(s)	Description and rationale	Source and Resolution	HNVf type	Reference
<b>Indicator Species (isp)</b>					
Important Bird and Biodiversity Areas	IBAs	IBAs are sites needed to ensure the survival of viable populations of most world's bird species.	1:20,000 SPEA (2003)	HNVf type 3	Andersen et al. (2003), Paracchini et al. (2008)
Indicator plant species	IPs	Plant species under conservation status (Habitats Directive) depending on extensive farmlands maintenance can provide additional information for the identification of HNVf areas ( <i>Angelica laevis</i> , <i>Paradisea lusitanica</i> , <i>Senecio doria legionensis</i> , and <i>Veronica micrantha</i> ).	Personal database		

nature value following the minimum–maximum approach (Andersen et al. 2003; Paracchini et al. 2008; IEEP 2010; for detailed information see Appendix S1). As a result, the spatial representation of putative “extremes” within which HNVf was likely to occur was obtained and used as component of the “Landscape Elements” set. The outcomes from such approach correspond to areas with very high likelihood (corresponding to land cover classes known to consist primarily of HNVf; *minimum* HNVf areas; pHNVf<sub>m</sub>, Fig. 2) and moderate likelihood (including other potential HNVf classes, depending on the farming intensity; *maximum* HNVf areas; pHNVf<sub>M</sub>, Fig. 2) of being HNVf<sub>1</sub> and HNVf<sub>2</sub> farmlands, respectively.

As land cover maps do not convey information on the land use intensity (Lomba et al. 2014), in Step 2 of the proposed framework additional information expressing the prevalence of a high proportion of semi-natural vegetation, the diversity of elements at the landscape level (Landscape Elements indicators), the extensive character of the farming practices (Extensive Practices indicators), and the diversity of crops (Crop Diversity indicators) were applied to refine the identification of HNVf<sub>1</sub> and HNVf<sub>2</sub>. In Step 3, Indicator Species were used to assess areas of HNVf<sub>3</sub>. Table 1 presents the indicators included in each indicator set, a short description and the underlying rationale, the units and scale and/or resolution (when applicable), and relevant supporting references (for full information see Appendix S3 in Supporting Information).

A more refined HNVf<sub>1</sub> assessment was achieved by overlaying the *minimum* HNVf areas and, sequentially, the livestock density index (LSI<sub>p</sub>) and the share of irrigation (Irrig<sub>p</sub>; Fig. 2 and Table 1). This allowed the identification of landscape parishes under more extensive agricultural practices. To refine assessment of HNV farmlands of type 2, the *maximum* HNVf map (which included other farmlands with potential to be of HNV, for example, mosaics of arable land and grasslands; cf. Appendix S1), and the three sets of indicators were combined. Farmlands under more intensive agricultural practices, expressed as higher values of LSI<sub>p</sub> and Irrig<sub>p</sub>, were considered and overlaid with indicators expressing small-scale features of the landscape and the diversity of crops (Landscape Elements and Crop Diversity indicators, respectively; cf. Fig 2 and Table 1). Step 2 resulted in the spatial identification of HNV types 1 and 2 in the study area.

To test the sensitivity of our approach and to identify any potential HNVf<sub>3</sub> areas, data on the distribution of four plant species of recognized conservation value and dependent on agricultural-related habitats (Step 3, Fig. 2 and Table 1; Paracchini et al. 2008) were compared against HNVf<sub>1</sub> and HNVf<sub>2</sub> maps, and their coincidence was analyzed. Information on indicator plant species was

complemented with consideration of the location of Important Bird Areas (IBAs; Paracchini et al. 2008). Assessing the coincidence of the HNVf areas identified in Step 2 with the known occurrence of Indicator Species (Step 3) is essential to highlight any need to include additional complementary HNVf areas that otherwise would not be identified due to the intensity of the agricultural practices.

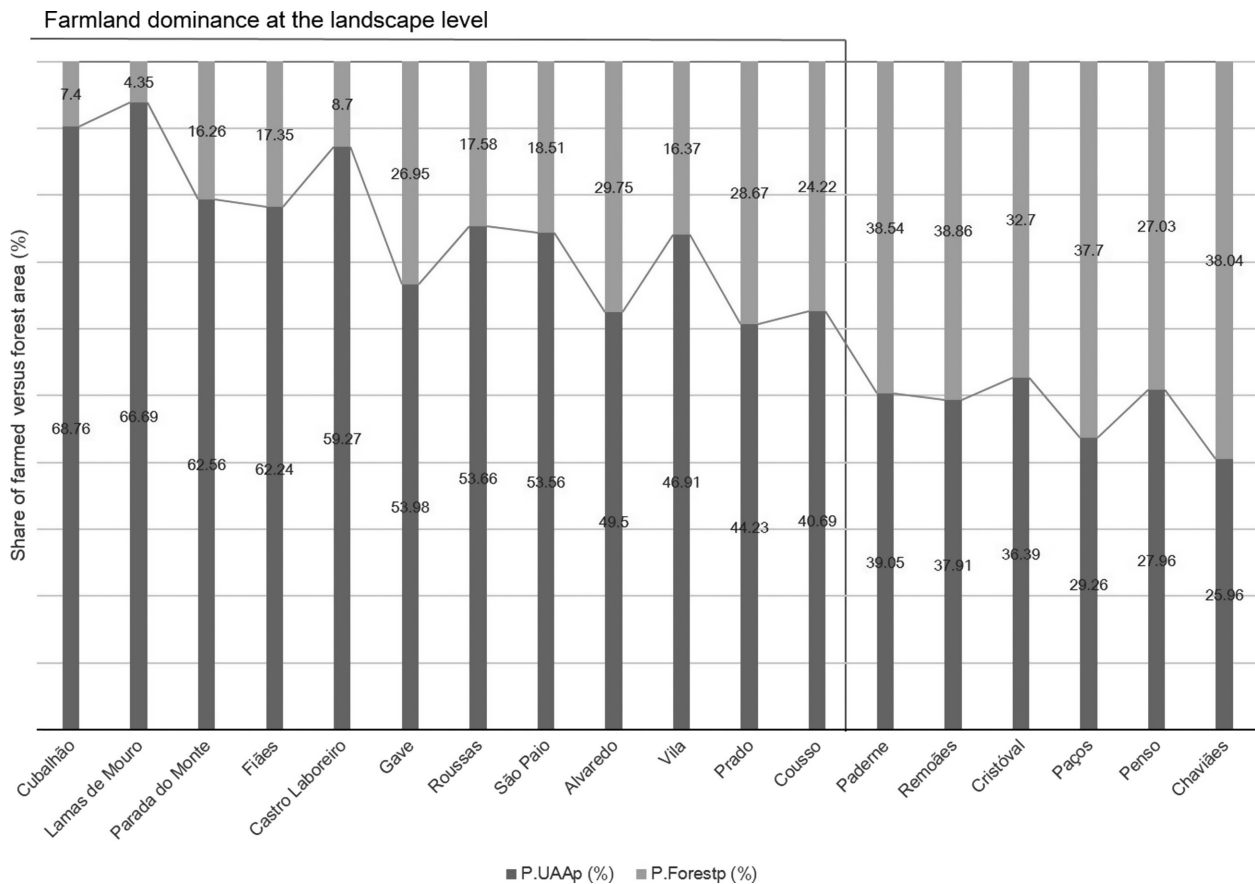
Spatial analysis was implemented in ArcGIS 10.2 for Desktop (ESRI 2009–2013), and landscape metrics were calculated with Patch Analyst 5.1 (Rempel et al. 2012), considering that each landscape is coincident with individual parishes. Landscape metrics were computed considering all classes for each parish, and considering only farmland areas per parish, to assure that landscape patterns are able to express small-scale patterns. As both patterns were found to be similar, only metrics at the landscape level were considered to comply with HNVf operationalization requirements (Lomba et al. 2014) and thus retained for all analysis. Sets of indicators presented

in Table 1 were tested for correlation by Kendall’s  $\tau$  index (a nonparametric index suitable for low number of cases), and a value of 0.7 established as a maximum threshold for indicators was considered. Overall, threshold values for the indicators applied ( $HNVf_1$  and  $HNVf_2$ ) were selected as being those enabling a more clear segregation between parishes, and groups’ robustness was tested with cluster analysis techniques (Statsoft, 2013).

### Results

The spatially explicit expression of the share of farmed (P.UAA<sub>p</sub>) and forested (P.Forest<sub>p</sub>) areas in each of the 18 Melgaço’s parishes is represented in Fig. 3 (for detailed information see Table S4.1 on Supporting Information Appendix S4).

Overall, the values of UAA per parish ranged from 25.96% in Chaviães to 68.76% in Cubalhão (cf. Fig. 3). Conversely, the lowest value of forested areas was in Lamas de Mouro (4.30%) and the highest in Remoães



**Figure 3.** Relationship between shares of farmland (P.UAA<sub>p</sub>) versus forest (P.Forest<sub>p</sub>) areas for each parish within Melgaço municipality. Areas are expressed as hectares (ha). Share of farmlands (P.UAA<sub>p</sub>) and forests (P.Forest<sub>p</sub>) is presented as percentage (%) of the respective cover in relation to the parish area ( $T_{area}$ ). *n.f.* stands for not farmland areas. Gray line highlights the threshold considered.

(38.9%). The analysis of farmed versus forested areas, presented in Fig. 3, highlighted the farmland dominance at the landscape level (i.e., parish level) for 12 of the 18 parishes. As a rule of thumb, a percentage of 40% was established to define the dominance of farmed areas in the landscape, thus excluding Chaviães, Cristóval, Paços, Paderne, Penso e Remoães, as legible parishes for HNVf assessment.

**Landscape and farming system indicators for the assessment of HNVf<sub>1</sub> and HNVf<sub>2</sub>**

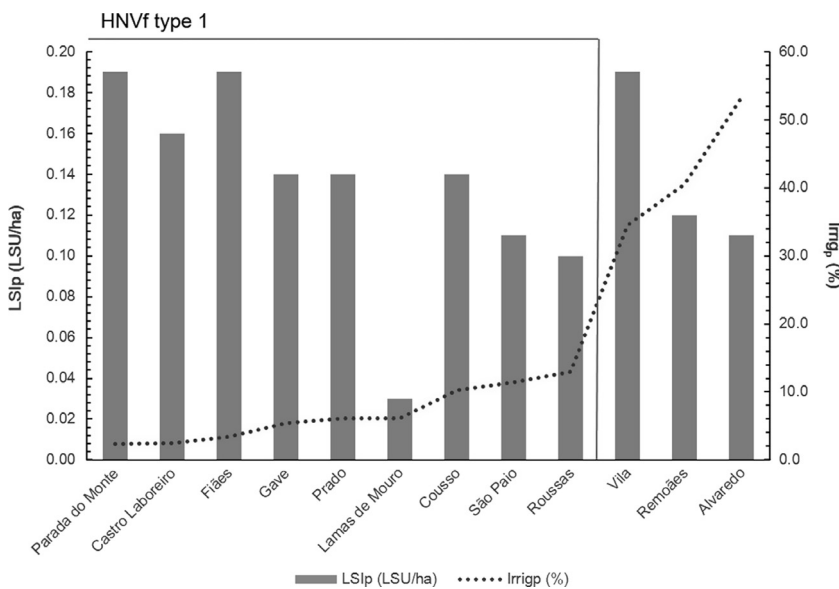
Implementation of Step 2 (cf. Fig. 2) resulted in the discrimination between HNVf<sub>1</sub> and HNVf<sub>2</sub> (Fig. 4 and Table 2, respectively; Fig. 5). Figure 4 (for full information see Appendix S4 in Supporting Information) shows the relation between values established as thresholds for the indicators of intensity of agricultural practices. Livestock density and the share of irrigated areas at the parish level were analyzed to assess HNVf<sub>1</sub>. As all values for LSI<sub>p</sub> were found to be under 0.2 LSU/ha, values of Irrig<sub>p</sub> above 15% of the total UAA were considered as a threshold for assessing HNVf<sub>1</sub>. As a result, the parishes Vila, Prado, and Alvaredo were excluded.

Assessing the location and extent of HNVf<sub>2</sub> required not only data on the intensity of the agricultural practices, but also on the structure and composition of the landscapes and the diversity of crops. Application and analysis of such indicators were carried out sequentially, with values for each parish ranked for the 12 parishes previously identified as farmlands (Table 2). The diversity of such potential HNVf<sub>2</sub> was analyzed first in relation to the Shannon’s Evenness Index (SEI<sub>p</sub>; Table 2). A

threshold value of 0.60 for SEI<sub>p</sub> excluded four parishes, Castro Laboreiro, Cubalhão, Lamas de Mouro, and Parada do Monte. The number of patches (NP<sub>p</sub>) and the mean shape index at the parish level (MSI<sub>p</sub>) were also analyzed to assess small-scale patterns in the landscape. Because these landscape metrics showed low variability, values for edge density (Ed<sub>p</sub>) were also analyzed (Landscape Elements set of indicators; Table 2), and parishes exhibiting values under 300 ha were excluded as potential HNVf<sub>2</sub>. The exclusion of Couso, Fiães, and Gave, after application of the ED<sub>p</sub>, was further confirmed when considering the Crop Diversity indicators (Table 2), as the aforementioned parishes were found to exhibit the lowest values of Shannon’s Evenness Index for Crop Diversity (SDI<sub>c</sub>), even though Couso and Gave exhibit the highest values for the number of crops (Scrop<sub>p</sub>).

Figure 5 shows the spatially explicit representation of HNVf<sub>1</sub> (a) and HNVf<sub>2</sub> (b) areas. Overall, areas of HNVf<sub>1</sub> appear to be distributed through the eastern part of the study area, whereas HNVf<sub>2</sub> were found to be located mostly on the northwestern area. Table 3 provides a comparison of the results from the minimum–maximum approach (Step 1) with the results from the further refinement using the proposed approach (i.e., including Steps 2 and 3). Whether the estimate of HNVf decreases, is maintained, or increases as a result of the refinements achieved from the proposed approach is also shown.

Considering HNVf<sub>1</sub>, when comparing the two approaches, a decrease of area was observed in Alvaredo and Prado (cf. Figs. 2 and 3), whereas in majority of parishes, the trend was for maintenance of the total area. Conversely, in the case of HNVf<sub>2</sub>, differences between the two approaches are expressed as a decrease for all targeted



**Figure 4.** Rank of parishes according to extensive practices indicators, livestock density index (LSI<sub>p</sub>), and share of irrigated area (Irrig<sub>p</sub>). Gray line highlights the threshold considered to assess High Nature Value farmland (HNVf) type 1 extent.



**Table 2.** Rank of parishes according to Extensive Practices, Landscape Elements, and Crop Diversity indicators, with gray area highlighting thresholds considered for each set of indicators to assess HNVf type 2 extent. All areas are expressed as hectares (ha).

Sets of Indicators Parish	Extensive practices			Landscape elements				Crop diversity								
	LSlp (LSU/ha)	Irrig <sub>p</sub> (%)	Parish	SEI <sub>p</sub>	Parish	SDlp	Parish	NP <sub>p</sub>	Parish	MSI <sub>p</sub>	Parish	ED <sub>p</sub> (m/ha)	Parish	SDIc	SEIc	SCrop <sub>p</sub>
Lamas de Mouro	0.03	2.38	Prado	0.86	Alvaredo	2.68	Gave	212.00	Vila	2.60	Vila	448.22	São Paio	1.03	0.23	5.00
Roussas	0.10	12.94	Alvaredo	0.79	Prado	2.63	Roussas	174.00	Prado	2.57	Alvaredo	429.37	Vila	0.78	0.22	5.00
Alvaredo	0.11	53.24	Couso	0.78	Couso	2.61	São Paio	142.00	Spaio	2.47	Prado	420.47	Roussas	0.75	0.17	5.00
São Paio	0.11	11.44	São Paio	0.75	Roussas	2.55	Fiães	137.00	Fiães	2.33	Roussas	338.17	Prado	0.72	0.18	5.00
Couso	0.14	10.19	Roussas	0.74	São Paio	2.31	Alvaredo	126.00	Alvaredo	2.31	São Paio	318.64	Alvaredo	0.58	0.12	5.00
Gave	0.14	6.16	Vila	0.71	Gave	2.28	Couso	111.00	Roussas	2.22	Couso	272.49	Gave	0.51	0.10	7.00
Prado	0.14	40.50	Gave	0.69	Vila	2.13	Prado	59.00	Gave	2.09	Fiães	272.15	Couso	0.32	0.05	7.00
Castro Laboreiro	0.16	2.50	Fiães	0.64	Fiães	2.01	Vila	42.00	Couso	2.09	Gave	238.81	Fiães	0.11	0.02	4.00
Fiães	0.19	5.45	Parada do Monte	0.58	Parada do Monte	1.97										
Parada do Monte	0.19	6.14	Cubalhã	0.56	Castro Laboreiro	1.65										
Vila	0.19	34.44	Lamas de Mouro	0.48	Cubalhã	1.60										
Cubalhã	0.23	3.38	Castro Laboreiro	0.45	Lamas de Mouro	1.58										

parishes. Overall, values for HNV farmlands, determined following the novel approach, resulted in a decrease of both HNVf<sub>1</sub> and HNVf<sub>2</sub> areas and a value of 1735.13 ha for the total HNVf extent.

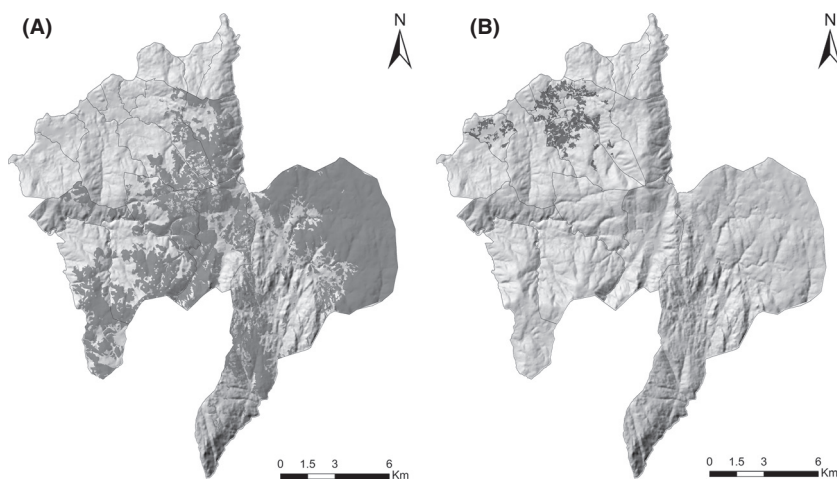
### Species indicators and HNVf<sub>3</sub> to support rare species

HNVf<sub>3</sub> were assessed by applying a sensitivity test to the calculated HNVf areas, and the results are presented in Fig. 6. In relation to the IBA PT002, located in the eastern part of the area, it comprises all of the extent of HNVf<sub>1</sub> identified in Castro Laboreiro and parts of that in Lamas de Mouro and Gave. As for Indicator Species, the four squares of 1 km<sup>2</sup> registered as occurrence areas for *Senecio legionensis* and 12 of 13 for *Paradisea lusitanica* were found to be partially within HNV farmlands type 1. *Veronica micrantha* occurrence in Castro Laboreiro was also found to be completely within HNVf type, whereas seven of 17 known populations of *Angelica laevis* were completely within targeted HNVf<sub>1</sub> areas.

### Discussion

HNVf biodiversity hotspots constitute highly heterogeneous agriculture-dominated landscapes, containing a diversity of land cover and a widespread occurrence of semi-natural vegetation such as extensive grasslands (Bignal & McCracken 2000; Beaufoy 2008; Peppiette 2011; Weissteiner, Strobl & Sommer 2011). The HNV farmlands concept recognizes the positive relation between traditional farming systems and practices (traditionally low intensity and input) and habitats and species with high nature conservation value (Beaufoy et al. 1994; Oppermann et al. 2012; Ribeiro et al. 2014; Lomba et al. 2014).

HNV farmlands assessment in each EU Member State is mandatory under the Common Monitoring and Evaluation Framework (EC, 2005) and essential to evaluate the effectiveness of the EU and national Rural Development Programs (EC, 2005, EC 2006; Van Orshoven et al. 2012). However, the implementation and operationalization of such a complex concept have been hampered by a range of limitations (Andersen et al. 2003; EEA 2012), as the low spatial, temporal, and thematic resolution of the majority of data sources, for example, CORINE land cover (Paracchini et al. 2008; Doxa et al. 2010, 2012; Lomba et al. 2014), which potentially underestimate the specific features of local land use and biodiversity elements. The integration of both farming practices and landscape features related data, and the implementation of cross-validation procedures in relation to biodiversity indicators (Bailey et al. 2007; Doxa et al. 2012) has been



**Figure 5.** Areas identified as High Nature Value farmlands type 1 (A) and type 2 (B) in the study area. Black lines represent the geographic boundaries of Melgaço's parishes.

highlighted as major challenges to be considered within national and/or regional assessments (EENRD 2009).

To address such challenges, and in agreement with the bottom-up approach proposed by Lomba *et al.* (2014), we implemented a spatially explicit framework to assess the extent and location of farmlands with high nature value and hence the definition of priority areas for maintenance of agro-biodiversity in the European countryside. In contrast to other approaches for HNV farmlands assessment (Peppiette 2011; Oppermann *et al.* 2012; Lomba *et al.* 2014), the framework allowed both the identification of HNVf at the level of the local administrative unit, that is, Melgaço municipality, and the identification of the extent of each individual HNVf types (Fig. 5; after Andersen *et al.* 2003). In particular, the framework enabled the identification of LAUs where farmlands are dominant in the landscape, which resulted in a decrease of HNV farmlands extent (types 1 and 2), when compared to approaches previously proposed (Paracchini *et al.* 2008; Lomba *et al.* 2014). Moreover, it also enabled the validation of the calculated extent of HNVf using species whose survival relies on extensively managed farmlands (HNVf<sub>3</sub>; cf. Fig. 6).

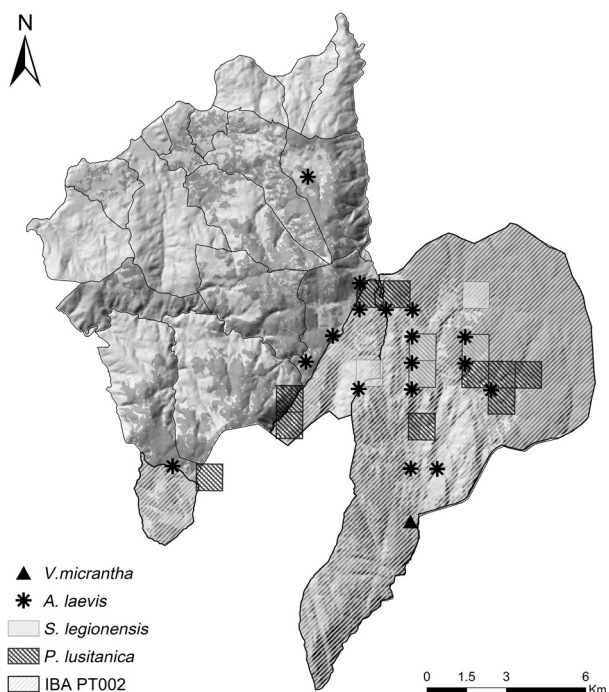
The advantages of the envisioned framework over other methods (see Lomba *et al.* 2014 for a comprehensive review of different methods) are the result of considering spatially explicit indicators informing not only on distinct biodiversity levels, but also on landscape structure, composition and diversity, and the intensity and diversity of crops and associated practices. Using data with the best spatial and temporal resolution available for each LAU, we ensure that the most detailed indicators were applied to map the extent of HNV farmlands in any targeted area. The proposed sets of indicators followed the recommendations of EU agro-environmental indicators (Paracchini *et al.* 2006), while also relying on data sources that are

periodically updated, for example, detailed land cover map (Associação de Municípios do Vale do Minho 2009) and agrarian statistics (INE 2009). As a result, our approach also ensures that the extent and dynamics of HNV farmlands can also be monitored over time, thus meeting RDP program requirements (EC 2006). However, results will be at large extent a trade-off between the thematic, spatial, and temporal resolution of the datasets available in each LAU, region and ultimately Member State. Even so, by mobilizing the best data available to inform on the proposed indicators (within a collaborative network for data exchanging; Lomba *et al.* 2014), it is assured that the best HNVf assessment is achieved for each time period.

Our approach allows the identification of areas relevant for the conservation, maintenance, and eventually enhancement of agro-biodiversity. Melgaço is currently under the designation of EU Less Favoured Areas (LFA) is a EU legal designation, that is, an area where agriculture is constrained by natural handicaps, and our results highlight the decreasing gradient of natural value from the eastern LAUs, for example, Castro Laboreiro (Beilin *et al.* 2014) to western LAU, thus the first highlighted as essential for both conservation of habitats (expressed as a high proportion of HNVf<sub>1</sub>; Fig. 5A) and species (both birds and plants; Fig. 6). Conversely, areas of HNVf<sub>2</sub> appear as complementary areas in northwestern LAUs, near the more urbanized areas (cf. Fig. 5B). Such outcomes constitute a step forward toward a more precise targeting of landscapes for agri-environment schemes, as they allow a more accurate discrimination of areas within landscapes that have a higher value for nature conservation. In fact, such discrimination is built not only on the ecological value of the farmlands but also on the extensive and/or traditional character of the agricultural practices.

**Table 3.** Farmlands with high nature value for each Melgaço's parish according to the minimum–maximum approach (pHNV<sub>f<sub>m</sub></sub> and pHNV<sub>f<sub>M</sub></sub>, respectively), and the HNV<sub>f<sub>1</sub></sub> and HNV<sub>f<sub>2</sub></sub> area identified following further refinement using the proposed spatially explicit approach. Comparison between the two approaches is expressed as trend for an increase (↑), decrease (↓), or no change (↔) in the calculation of HNV farmland areas. All areas are expressed in hectares (ha). n.a. stands for not applicable and refers to parishes where farmed areas are not dominant at the landscape level.

Parish	pHNV <sub>f<sub>m</sub></sub> (ha)	pHNV <sub>f<sub>M</sub></sub> (ha)	HNV <sub>f<sub>1</sub></sub> (ha)		HNV <sub>f<sub>2</sub></sub> (ha)	
Alvaredo	4.17	216.02	–	↓	99.03	↓
Castro Laboreiro	4730.33	5242.61	4730.33	↔	–	↓
Chaviães	n.a.		n.a.			
Couso	158.56	294.42	158.56	↔	–	↓
Cristóval	n.a.					
Cubalhão	673.32	798.81	673.32	↔	–	↓
Fiães	557.88	697.85	557.88	↔	–	↓
Gave	778.99	1006.15	778.99	↔	–	↓
Lamas de Mouro	1066.22	1176.45	1066.22	↔	–	↓
Paços	n.a.		n.a.			
Paderne	n.a.		n.a.			
Parada do Monte	903.10	1139.98	903.10	↔	–	↓
Penso	n.a.		n.a.			
Prado	–	116.06	–	↓	79.35	↓
Remoães	n.a.		n.a.			
Roussas	311.22	517.95	311.22	↔	162.26	↓
São Paio	298.55	533.07	298.55	↔	196.60	↓
Vila	–	87.10	–	↔	80.93	↓
Total (ha)	9525.66	11826.48	9478.18	↓	618.17	↓
Total HNVf (ha)		11826.48			10096.35	↓



**Figure 6.** Representation of total HNVf (types 1 and 2) in relation to known occurrences of indicator plant species and Important Bird Areas (IBAs).

An added value of the approach is therefore a more refined identification of areas where land-sharing for biodiversity conservation and/ or enhancement in the European countryside may be relevant or even essential and is not expected to cause conflicts with other (more intensive) land uses (Egan & Mortensen 2012; Navarro & Pereira 2012). Such refinement can be useful to define priority areas to be targeted in rural landscapes where farmers can benefit from agri-environmental payments, to support the identification of areas with potential to maintain agricultural-dependent habitats, and ultimately to contribute to more effective RDPs. In the specific case of Melgaço, which is fully under the status of Less Favoured Areas (LFA) is a EU legal designation, highlighting areas with higher natural value and targeting them under agri-environmental payments may halt the agricultural abandonment trend in the area, which will be essential if we aim to maintain such areas and their agro-biodiversity in the future.

While at the local and regional level, the informed targeting of rural landscapes can enhance the ability of territories to support agro-biodiversity maintenance and other ecosystem services (including provisioning, regulating, and cultural), and to support an informed targeting of rural landscapes to be supported by agro-environmental

payments, our approach can be applied across the EU countryside, thus contributing to a more realistic mapping and assessment of HNVf at the EU level.

Even if the results of our approach are promising, there is room for improvement. The application of the spatially explicit framework to other farmlands, where the socio-ecological context is distinct, will allow testing of not only the sensitivity, but also of the transferability and simplicity, of the proposed sets of indicators. In addition, the detail of some of the options used in our approach will need to be altered to reflect variation across European farmlands, for example, the accepted threshold for the intensity of agricultural practices (Oppermann et al. 2012), and /or the targeted classes of land cover that reflect natural and semi-natural agricultural habitats (Paracchini et al. 2006, 2008; EEA 2012). Nevertheless, the application of a common approach will mean that the extent and distribution of different HNVf types will be more easily compared and contrasted at an EU level (Lomba et al. 2014). In addition, there is also scope to test the framework under scenarios of land use change (e.g., Verburg & Overmars 2009), to assess its ability to detect changes both in the condition and dynamics of HNVf, and thus to anticipate the loss of important areas for agro-biodiversity maintenance.

This proposed framework is, to our knowledge, one of only few that focus on the spatially explicit identification of the different types of HNV farmlands, thus complying with the EU need for strategic monitoring of the EU countryside. We advocate that the implementation of this framework should be linked strongly to a collaborative European network (Lomba et al. 2014) that can promote the integration and exchange of data from different sources and across scales. The development of such an approach is essential if the range of threats facing HNVf landscapes is to be identified and monitored properly from local to European level. Moreover, this would then allow relevant agri-environment measures to be developed and implemented at the scale required to help maintain the habitats and species of high nature conservation value that are intimately associated with those landscapes.

## Acknowledgments

A.L. is supported by the Portuguese Science and Technology Foundation (FCT) through Postdoctoral Grant SFRH/BPD/ 80747/2011. D.M. input to this manuscript was partially funded by the Scottish Government Rural Affairs & Environment Portfolio Strategic Research Programme 2011-2016, Theme 3: Land Use. The authors would like to thank M.C. and J.H. for their comments on an early version of this manuscript.

## Conflict of Interest

None declared.

## References

- Aavik, T., and J. Liira. 2009. Agrotolerant and high nature-value species—Plant biodiversity indicator groups in agroecosystems. *Ecol. Ind.* 9:892–901.
- Aguiar, C., O. Rodrigues, J. Azevedo, and T. Domingos, (2010) Parte II - Uma Avaliação dos Ecossistemas de Portugal: Capítulo 9, Montanha. Pp. 295–339 in H. M. Pereira, T. Domingos, L. Vicente, V. Proença, eds. *Ecossistemas e Bem-Estar Humano: Resultados da Avaliação para Portugal do Millennium Ecosystem Assessment*. Escolar Editora, Lisboa.
- Andersen, E., D. Baldock, H. Bennett, G. Beaufoy, E. Bignal, F. Bouwer, et al., (2003) Developing a high nature value farming area indicator: final report. pp. 75.
- Armengot, L., L. José-María, J. M. Blanco-Moreno, A. Romero-Puente, and F. X. Sans. 2011. Landscape and land-use effects on weed flora in Mediterranean cereal fields. *Agric. Ecosyst. Environ.* 142:311–317.
- Associação de Municípios do Vale do Minho (2009) *Promoção e Sustentabilidade das Paisagens do Vale do Minho (GAEPC/ON.2/2008–2011)*.
- Bailey, D., R. Billeter, S. Aviron, O. Schweiger, and F. Herzog. 2007. The influence of thematic resolution on metric selection for biodiversity monitoring in agricultural landscapes. *Landscape Ecol.* 22:461–473.
- Beaufoy, G. (2008) *HNV Farming – Explaining the concept and interpreting EU and National Policy Commitments*. Pp. 15. European forum on nature conservation and pastoralism.
- Beaufoy, G., D. Baldock, and J. Clarke. 1994. *The nature of farming - low intensity farming systems in nine European countries*. IEEP, London.
- Beilin, R., R. Lindborg, M. Stenseke, H. M. Pereira, A. Llausàs, E. Slätmo, et al. 2014. Analysing how drivers of agricultural land abandonment affect biodiversity and cultural landscapes using case studies from Scandinavia, Iberia and Oceania. *Land Use Policy* 36:60–72.
- Bignal, E. M., and D. I. McCracken. 2000. The nature conservation value of European traditional farming systems. *Environmental Reviews* 8:149–171.
- BioBio (2012) Biodiversity indicators for organic and low-input farming systems” (KBBE 227661). (eds F. Herzog, K. Balázs, P. Dennis, I. Geijzendorffer, J. K. Friedel, P. Jeanneret, M. Kainz, P. Pointereau).
- Cerqueira, Y., C. Araújo, J. Vicente, H. M. Pereira, and J. Honrado. (2010) *Ecological and Cultural Consequences of Agricultural Abandonment in the Peneda-Gerês National Park (Portugal)*.
- Cerqueira, Y., C. Araújo, J. Vicente, H.M. Pereira, and J. Honrado. 2010. *Ecological and Cultural Consequences of*



- Agricultural Abandonment in the Peneda-Gerês National Park (Portugal) Natural Heritage from East to West. (eds N. Evelpidou, T.d. Figueiredo, F. Mauro, V. Tecim & A. Vassilopoulos), pp. 175–183. Springer Berlin Heidelberg.
- Doxa, A., Y. Bas, M. L. Paracchini, P. Pointereau, J.-M. Terres, and F. Jiguet. 2010. Low-intensity agriculture increases farmland bird abundances in France. *J. Appl. Ecol.* 47:1348–1356.
- Doxa, A., M. L. Paracchini, P. Pointereau, V. Devictor, and F. Jiguet. 2012. Preventing biotic homogenization of farmland bird communities: the role of High Nature Value farmland. *Agric. Ecosyst. Environ.* 148:83–88.
- EC. 2005. Council regulation of 20 September 2005 on support for rural development by the European Agricultural Fund for Rural Development (EAFRD). EC No 1698/2005.
- EC. 2006. Rural development 2007–2013 handbook on common monitoring and evaluation framework; guidance document. DG for Agriculture and Rural Development, Brussels.
- EEA (2004) High Nature Value Farmland - Characteristics, trends and policy challenges. pp 32. EEA (European Environment Agency), Copenhagen.
- EEA (2012) Updated High Nature Value Farmland in Europe: An estimate of the distribution patterns on the basis of CORINE Land Cover 2006 and biodiversity data, The draft EEA Technical Report on a basis of the ETC SIA IP 2011 Task 421 implementation.
- EENRD (2009) Guidance Document-The Application of the High Nature Value Impact Indicator Programming Period 2007–2013. Pp. 45. E. Communities, ed. European Evaluation Network for Rural Development, Brussels.
- Egan, J. F., and D. A. Mortensen. 2012. A comparison of land-sharing and land-sparing strategies for plant richness conservation in agricultural landscapes. *Ecol. Appl.* 22:459–471.
- ESRI (2009–2013) ArcMap 10.2. Environmental Systems Research Institute Inc.
- Halada, L., D. Evans, C. Romão, and J.-E. Petersen. 2011. Which habitats of European importance depend on agricultural practices? *Biodivers. Conserv.* 20:2365–2378.
- IEEP (2010) Working paper on “Approaches for assessing the impacts of the Rural Development Programmes in the context of multiple intervening”. (ed. R. Lukesch, B. Schuh), pp. 226.
- INE (2009) Recenseamento agrícola - séries históricas. Localização geográfica NUTS-2001. URL: <http://ra09.ine.pt>. Last updated 23/05/2011. Downloaded [25.07.2013].
- Jongman, R. H. G. 2013. Biodiversity observation from local to global. *Ecol. Ind.* 33:1–4.
- Kristensen, P. 2003. EEA Core Set of Indicators: Revised Version April 2003. EEA Technical Report, pp. 79. Copenhagen.
- Lomba, A., J. Gonçalves, F. Moreira, and J. Honrado. 2012. Simulating long-term effects of abandonment on plant diversity in Mediterranean mountain farmland. *Plant Biosyst., An International Journal Dealing with all Aspects of Plant Biology* 147:328–342.
- Lomba, A., C. Guerra, J. Alonso, J. P. Honrado, R. Jongman, and D. McCracken. 2014. Mapping and monitoring High Nature Value farmlands: challenges in European landscapes. *J. Environ. Manage.* 143:140–150.
- Maxted, N.. 2012. Agrobiodiversity conservation: securing the diversity of crop wild relatives and landraces. CABI, UK.
- Moreira, F., M. J. Pinto, I. Henriques, and T. Marques, (2005) The Importance of Low-Intensity Farming Systems for Fauna, Flora and Habitats Protected Under the European “Birds” and “Habitats” Directives: Is Agriculture Essential For Preserving Biodiversity in the Mediterranean Region?. Pp. 117–145 in A. R. Burk, ed. Trends in biodiversity research. Nova Science Publishers, Inc., United States of America.
- Navarro, L., and H. Pereira. (2012). Rewilding Abandoned Landscapes in Europe. *Ecosystems* 15:900–912.
- Oppermann, R., G. Beaufoy, and G. Jones (eds). 2012. High nature value farming in Europe. 35 European countries: experiences and perspectives. Verlag Regionalkultur, Ubstadt-Weiher, Germany.
- Overmars, K. P., J. Helming, H. van Zeijts, T. Jansson, and I. Terluin. 2013. A modelling approach for the assessment of the effects of Common Agricultural Policy measures on farmland biodiversity in the EU27. *J. Environ. Manage.* 126:132–141.
- Paracchini, M. L., J.-M. Terres, J.-E. Petersen, and Y. Hoogeveen, (2006) Background Document on the Methodology for Mapping High Nature Value Farmland in EU27. *European Commission Directorate General Joint Research Centre and the European Environment Agency*, pp. 32.
- Paracchini, M. L., J.-E. Petersen, Y. Hoogeveen, C. Bamps, I. Burfield, and C. Van Swaay, (2008) High Nature Value Farmland in Europe - An estimate of the distribution patterns on the basis of land cover and biodiversity data. Pp. 87. JRC scientific and technical reports. Joint Research Centre - Institute for Environment and Sustainability, Luxembourg.
- Paracchini, M. L., J.-M. Terres, J.-E. Petersen, and Y. Hoogeveen. 2010. High nature value farmland and traditional agricultural landscapes, open opportunities in the development of rural areas. Pp. 432 in A. V. D. B. Pedroli, G. de Blust, M. L. Paracchini, D. Wascher and F. Bunce, eds. Europe’s living landscapes. Essays on exploring our identity in the countryside. KNNV Publishing (The Netherlands) in cooperation with LANDSCAPE EUROPE, Zeist.
- Pedroli, B., A. Van Doorn, G. De Blust, M.-L. Paracchini, D. Wascher, and F. Bunce. 2007. Europe’s living landscapes. Essays on exploring our identity in the countryside. Landscape Europe/KNNV, The Netherlands.



- Peppiette, Z. E. N. (2011) The challenge of monitoring environmental priorities: the example of HNV farmland. Paper prepared for the 122nd EAAE seminar Evidence-based agricultural and rural policy making: Methodological and empirical challenges of policy evaluation. Ancona, 2011.
- Pôças, I., M. Cunha, A. R. S. Marcal, and L. S. Pereira. 2011. An evaluation of changes in a mountainous rural landscape of Northeast Portugal using remotely sensed data. *Landsc. Urban Plan.* 101:253–261.
- Pointereau, P., M.L. Paracchini, J.-M. Terres, F. Jiguet, Y. Bas, and K. Biala. 2007. Identification of High Nature Value Farmland in France through Statistical Information and Farm Practices Surveys. Luxembourg: Office for Official Publications of the European Communities. EUR – Scientific and Technical Research series, pp. 65.
- Pointereau, P., A. Doxa, F. Coulon, F. Jiguet & M.L. Paracchini. 2010. High Nature Value Farmland and Common Bird Indicators. Spatial and Temporal Modifications in Agricultural Practices and Bird Communities. Office for Official Publications of the European Communities, Luxembourg.
- Rempel, R. S., D. Kaukinen, and A. P. Carr. 2012. Patch analyst and patch grid. Ontario ministry of natural resources. Centre for Northern Forest Ecosystem Research, Thunder Bay, ON.
- Ribeiro, P. F., J. L. Santos, M. N. Bugalho, J. Santana, L. Reino, P. Beja, et al. 2014. Modelling farming system dynamics in High Nature Value Farmland under policy change. *Agric. Ecosyst. Environ.* 183:138–144.
- SPEA (2003) Áreas Importantes para Aves (IBAs) em Portugal. <http://ibas-terrestres.spea.pt>. [Accessed and downloaded 23.04.2014].
- Statsoft, I. (2013) STATISTICA (data analysis software system), version 12.0. [www.statsoft.com](http://www.statsoft.com).
- Stoate, C., A. Báldi, P. Beja, N. D. Boatman, I. Herzon, A. van Doorn, et al. 2009. Ecological impacts of early 21st century agricultural change in Europe - A review. *J. Environ. Manage.* 91:22–46.
- Tscharntke, T., A. M. Klein, A. Kruess, I. Steffan-Dewenter, and C. Thies. 2005. Landscape perspectives on agricultural intensification and biodiversity - ecosystem service management. *Ecol. Lett.* 8:857–874.
- Van Orshoven, J., J.-M. Terres, and T. E. Tóth (2012) Updated common bio-physical criteria to define natural constraints for agriculture in Europe. Definition and scientific justification for the common biophysical criteria; Technical Factsheets. JRC Scientific and Technical reports. ISBN 978-92-79-23066-0.
- Verburg, P., and K. Overmars. 2009. Combining top-down and bottom-up dynamics in land use modeling: exploring the future of abandoned farmlands in Europe with the Dyna-CLUE model. *Landscape Ecology* 24:1167–1181.
- Wascher, D. M., vanEupen M., C. A. Múcher, and I. R. Geijzendorffer. (2010) Biodiversity of European agricultural landscapes: Enhancing a high nature value farmland indicator. Wageningen, Statutory research tasks Unit for Nature & the Environment, WOt working document. pp. 88.
- Weisteiner, C. J., P. Strobl, and S. Sommer. 2011. Assessment of status and trends of olive farming intensity in EU-Mediterranean countries using remote sensing time series and land cover data. *Ecol. Ind.* 11:601–610.

## Supporting Information

Additional Supporting Information may be found in the online version of this article:

**Appendix S1.** Utilised Agricultural Area (UAA) spatially explicit definition in relation to land cover classes.

**Appendix S2.** Spatially explicit definition of Areas of Natural Constraints for Agriculture.

**Appendix S3.** Indicators used to implement the spatially explicit approach to assess the extent of High Nature Value farmlands.

**Appendix S4.** Rank of targeted parishes according to shares of farmland versus forests areas and extensive practices indicators within Melgaço Municipality.