

LanDAT: Landscape Dynamics Assessment Tool

Focuses on historical change and trends

► <https://forestthreats.org/research/projects/project-summaries/landat>

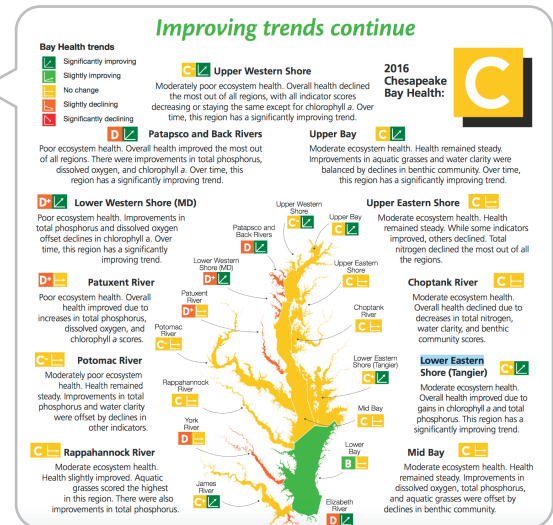
- Designed to help assess and interpret changes to landscapes (or large ecosystems) and subsequently the ecological services and benefits they provide to people.
- Allows users to examine broad patterns in vegetation change at large scales and better understand how landscape properties support or compromise ecosystem services.

Report Card

Current assessment of ecological health

► <http://applcc.org/research/applcc-funded-projects/tennessee-river-basin-report-card/>

- Will provide a vital baseline on the current conditions of important natural resources and contain colorful illustrations, graphics, and meaningful measurements.
- Present a suite of key natural resource indicators that reflect conditions across the whole of the geography - such as water quality - and prescribe a grade (A-F) based on ecological health.



NatureScape

Prioritization tool to achieve future landscape conservation

► <http://applcc.org/research/applcc-funded-projects/interactive-conservation-planning-and-design>

- A series of maps or data layers that illustrate the location of key focal landscapes and priority resources, or combined into decision support tool that can inform managers and conservationists about the quality, quantity, and location of habitat needed to protect biodiversity.
- Helps to prioritize both natural and socio-ecological systems as well as actions that hold the greatest promise for the protection of biodiversity.